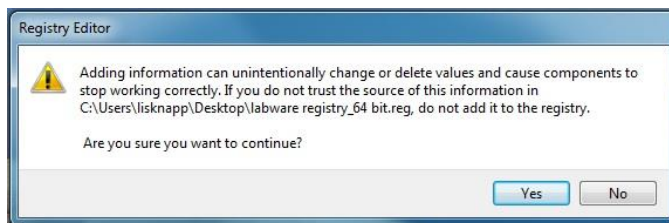


## Adding a New Piece of Labware to VWorks

1. Verify the system type, 32 or 64 bit, by going to Control Panel > System and Security > System

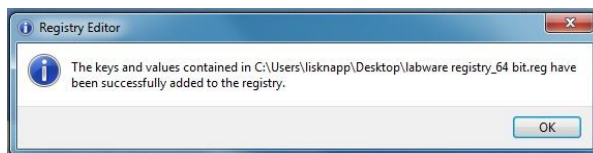


2. Find the appropriate file, 32 or 64 bit. If file is send as a .txt file, rename changing the extension to .reg
3. Double-click on the .reg file. You will get the following error



Select "Yes"

4. Once you have done this, you will get the following message



- Once you have done this, go into Tools > Labware Editor. Follow the steps in the following image to make sure the labware is in the “Uses Standard Platepad” Labware Class.

